



the Librarian show you round the Library so that you can select a suitable title or titles from the collection.

The suggested minimum contribution for participating in the scheme is £350 for each title that you may choose, more if you wish. There is no limit to the amount nor to the number of titles chosen

Once you have selected your book or books, we will provide a simple form for you to complete, one that is appropriate for the arrangement you wish to follow.

\*

If you need more information about the Library, please contact our Librarian by letter to the address below, or by telephone (01621 854850), or by email at [info@thomasplumeslibrary.co.uk](mailto:info@thomasplumeslibrary.co.uk)

Best of all, of course, is a visit to the Library on one of the days when it is open (Tuesday, Wednesday and Thursday from 2pm to 4pm, and on Saturday from 10am till noon).

More information about the scheme itself is obtainable from the Administrator of the Benefaction scheme, at Thomas Plume's Library, Market Hill, Maldon, Essex CM9 4PZ.

The Rev. Canon DAVID ATKINS  
Chairman of the Trustees

*The Thomas Plume Library Trust is a registered charity, number 310661*



The Library of Dr Thomas Plume

\*

## A COMMEMORATIVE BENEFACTION

This is a scheme which enables you or your friends to keep your name or theirs alive in the long term, by helping to increase the endowment of one of the great jewels of East Anglia – the Library of Dr Thomas Plume in Maldon, Essex.

It was founded 300 years ago, in 1704, when Dr Plume converted a derelict church into a library and grammar school and left the town of Maldon some 7,000 books to be used for the public good. The collection has volumes on all subjects known in the seventeenth century. The Library still exists today in its original home, and is open to the public on four days each week.

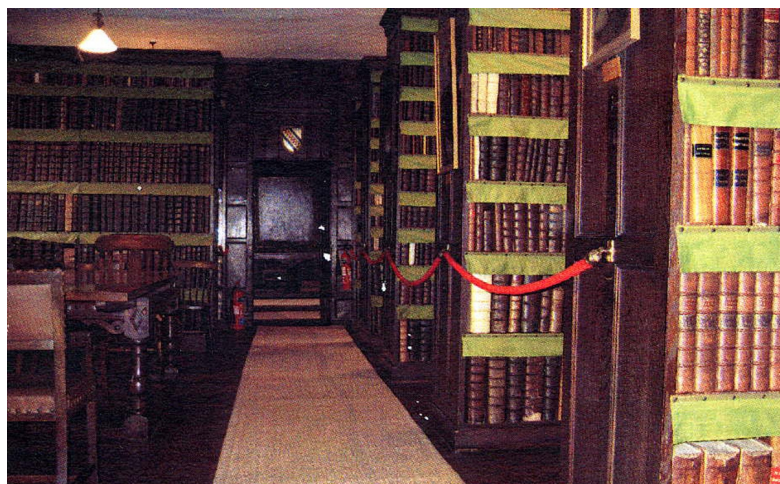
It is a visually stunning time capsule, and not only is it historically fascinating as a rare survival of its kind, but it includes many books not in the British Library and is an invaluable resource to scholars for research of all kinds. However, the endowment Dr Plume left us is no longer sufficient for the maintenance of the library as Dr Plume directed in his will, and the Library Trustees are having to seek sums to add to our existing endowment for the general upkeep of the Library.

That is why we have set up this scheme. But we do not merely seek your financial help: we want to make sure that all our benefactors are also involved in the Library itself, by being closely linked to a book or books that you have selected in the Plume collection.

The scheme will work in two ways:

*First*, we will inscribe the name of the person to be commemorated on a nobly-designed label in a book of your choice in the Library, and we undertake to keep that volume in really good condition,  
*Secondly*, for each title you have chosen, we will enter the name of the person to be commemorated, together with brief biographical details (and your name as donor if appropriate), into a magnificently leather-bound volume. This volume will be kept on the open shelves and will be a permanent memorial, which friends and family can visit and inspect in the delightful setting of the Library, together with the book, or books of your choice. It is the intention of the scheme that this nomination will remain in perpetuity. Eventually, the accumulated biographies will be of interest to scholars, as they will build up a unique record of the times.

Our benefactors' names will also be included in the Library's computerised catalogue, available online all over the world.



There are several ways in which you can participate in the scheme. You can choose a book with which you yourself would like to be associated and, in return for a donation to our fund, have your details entered into our memorial book, and your name shown on the bookplate.

Or you may wish to honour a relative or friend by choosing a book to be entered in the scheme in their name. These two procedures would be by straightforward gift to the Library, which could be made with a Gift Aid Declaration, if that is appropriate.

And finally, you can participate in the scheme by making a bequest to the Library in your will, having already selected your book or books. In these days of increasing popularity of cremation, this memorial represents the equivalent of a tablet in a cemetery, but by gifting money to the Plume Library, it becomes a living commemoration rather than a sterile tablet. One great advantage is that such a gift is exempt from inheritance tax.

All these possibilities require the most important first step: a visit to the Plume Library. We hope you will make time to let